

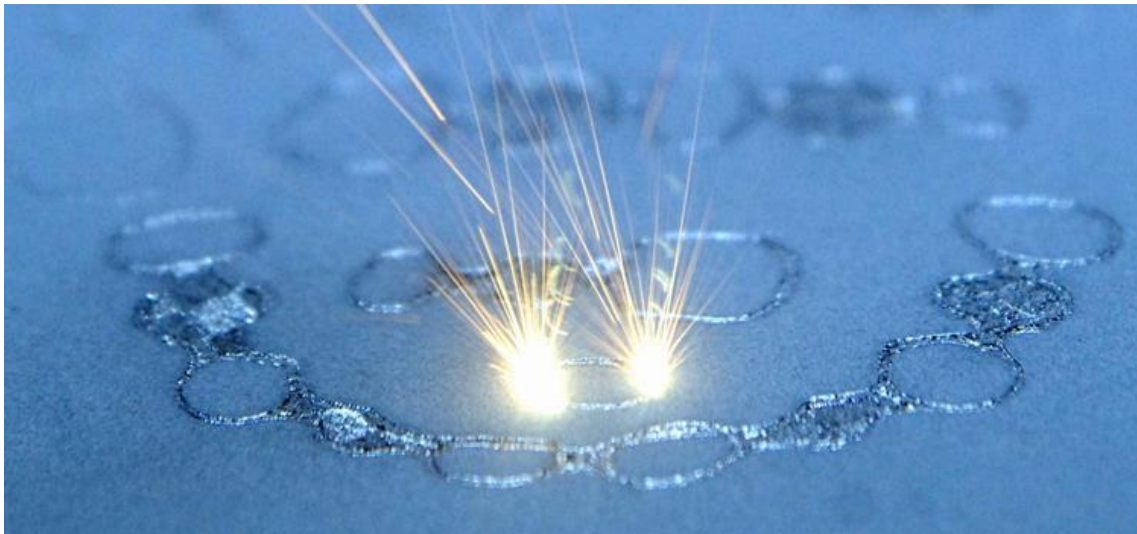


FLUSSFISCH

# AI-DRIVEN DATA PREPARATION FOR DENTAL APPLICATIONS

BY TIM-FREDERIC FLUSSFISCH

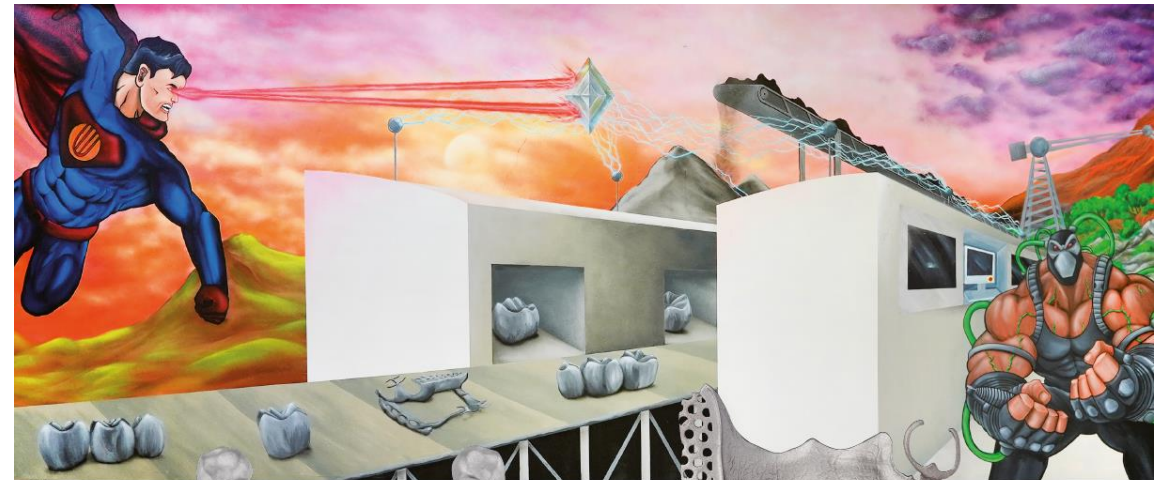
# OVERVIEW



- INTRODUCTION/WHAT WE ARE DOING
- HOW WE DID IT
- HOW WE DO IT NOW
- WHAT WE USE
- QUESTIONS

# INTRODUKTION & WHAT WE ARE DOING

- 1911 Establishment of Michael Flussfisch GmbH
- 2008 Start SLM Corwns and Bridges
- 2013 Start SLM RPD'S
- 2022 Moving to AI



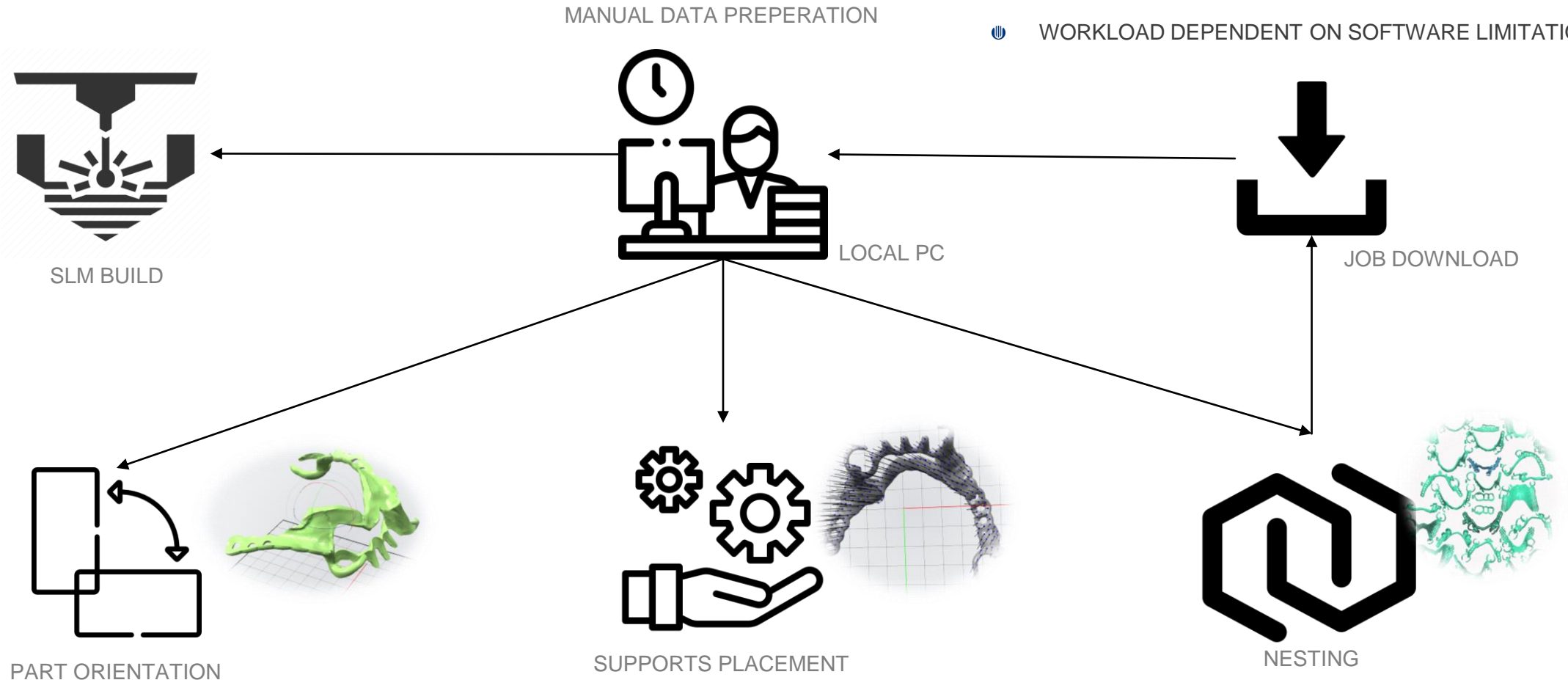
CROWNS & BRIDGES

RPD

# HOW WE DID IT

MANUAL DATA PREPARATION

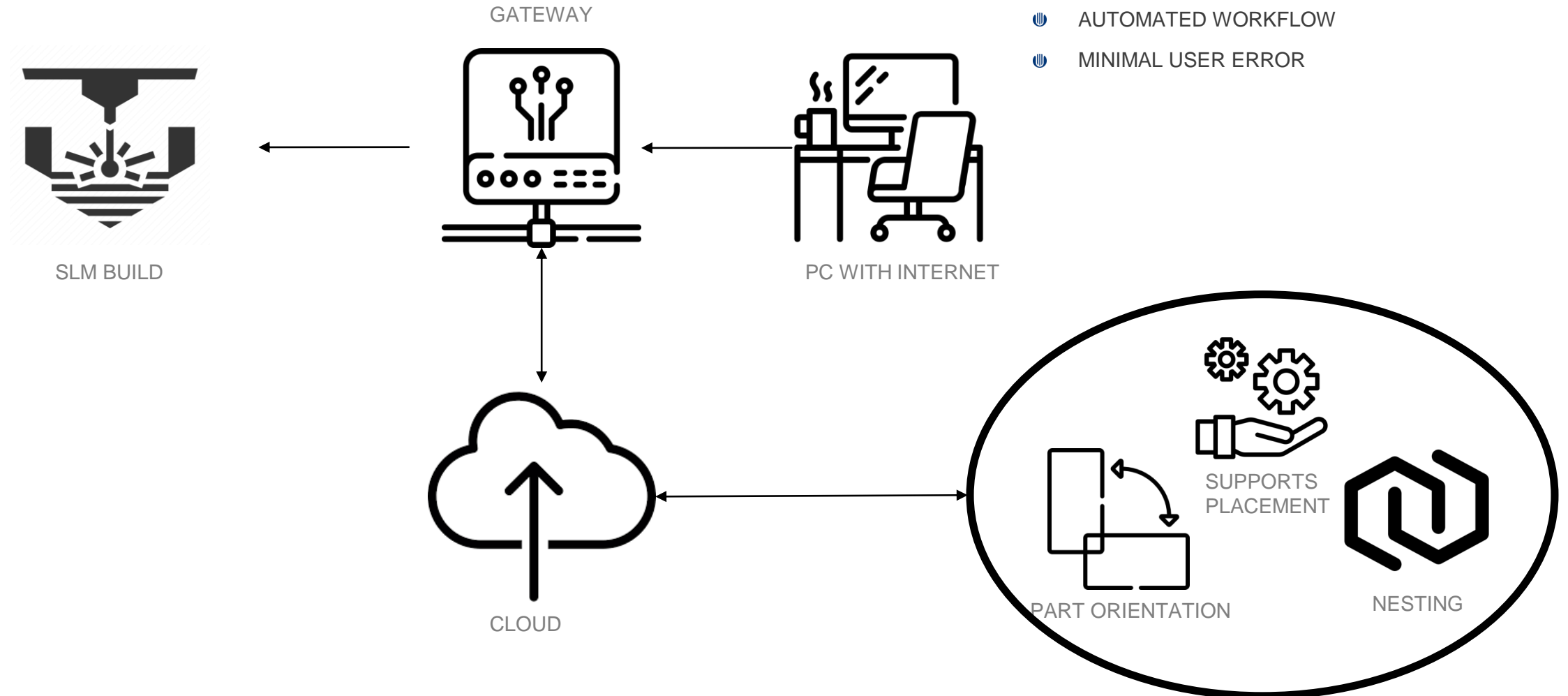
- SPEED IS HIGHLY DEPENDENT ON EMPLOYEE EXPERIENCE LONG EMPLOYEE TRAINING NEEDED
- MANUAL PART ORIENTATION
- SUPPORTS PLACEMENT HALF AUTOMATED HALF MANUALLY
- SLOW PROCESSING TIME
- WORKLOAD DEPENDENT ON SOFTWARE LIMITATIONS



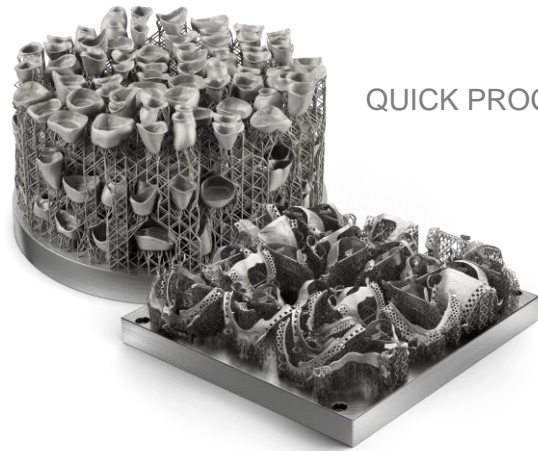
## HOW WE DO IT NOW

AUTOMATED DATA PREPARATION WITH AI

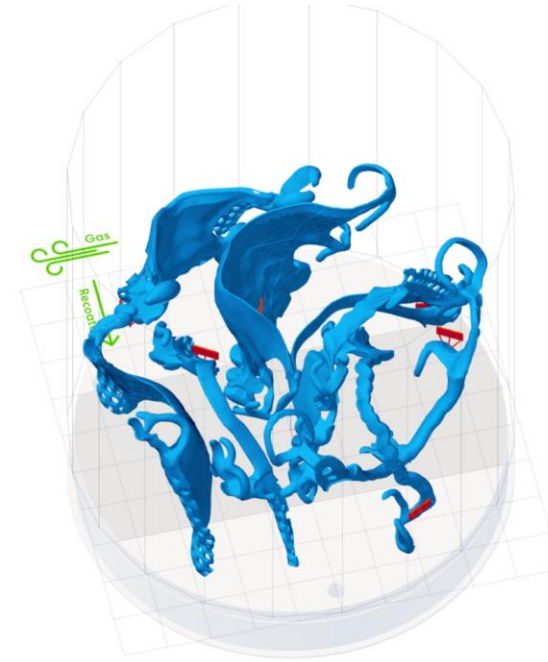
- NO EXPERIENCE REQUIRED
- DATA PREPARATION FROM ANYWHERE
- CLOUD PROCESSING
- AUTOMATED WORKFLOW
- MINIMAL USER ERROR



## WHAT WE USE

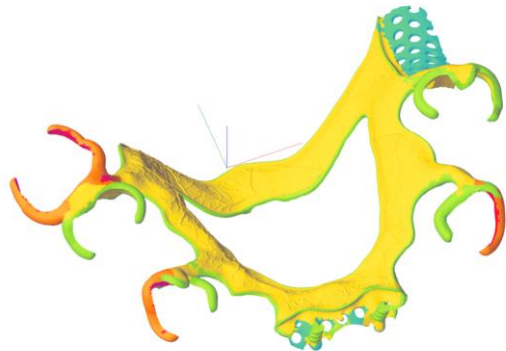


QUICK PROCESSING TIMES



3D NESTING

# OQTON



INDIVIDUAL SUPPORT PARAMETERS AND PRE-DEFINED ORIENTATION BY OBJECT TYPE



COMPLETE AUTOMATION



FLUSSFISCH

**END OF PRESENTATION**



**THANKS FOR YOUR ATTENTION**

imgflip.com